

Ratios of Students per Household **3**

While the common assumption is that every home contains an average of two students, in reality this ratio of students per home is actually much lower. Most suburban Districts average about 0.5 to 0.75 students per home overall, but more importantly, some specific neighborhoods have much higher and much lower ratios than the average. It is important for PASA to understand which neighborhoods are more student-oriented and which neighborhoods house more empty-nest families so that comparable ratios can be applied to the projected new housing.

Ratios of Students per Household – Single Family Housing

The first map and chart in this chapter show ratios of students for single-family units within major subdivisions. These ratios were gathered through field work to analyze the number of currently occupied homes on each street for representative subdivisions throughout the District.

The ratios of students per home ranged from **0.00** to **1.56** in specific subdivisions, and the weighted average throughout the District was **0.65** students per single-family home.

The ***highest ratios*** of students per occupied home were found in the following subdivisions:

Planning Unit	Development	Ratio
55C	Hamill Ranch	1.57
52B	Timber Meadow	1.46
61, 62A	Willowood	1.35
57B	Copper Falls	1.26
58	Ash Creek	1.16
60	Blue Creek	1.15
9B	Five Oaks MHP	1.14
34B	Villas at Candlelight Park	1.14
5C	Gleannloch Farms - Manor Estates	1.12

The lowest ratios were found in the following subdivisions:

Planning Unit	Development	Ratio
1A	Augusta Pines - The Gardens	0.00
1A	Augusta Pines - The Villas	0.00
25	Champion Woods Estates - The Retreat	0.00
5C	Gleannloch Farms - Arbors	0.00
46	Marble Gate Court	0.00
9	Villa Nova	0.00
30A	Windrose - The Chancel	0.00
3A	Pine Trace	0.03
9C	Spring Oaks MHP	0.05

Such data are helpful in understanding why students are more dense in specific locations and which neighborhoods are empty-nest areas. They also point to neighborhoods that are disproportionately oriented to older students or to young students. The ratios help to estimate the grade-groups that will live in these neighborhoods over time, and, most importantly, assist in establishing the potential ratio of students per grade-group for comparable new subdivisions and new apartment complexes.

Although these ratios are utilized to obtain projections of added students for all new subdivisions and Planning Units, it is necessary to continue evaluating long-term trends in the ratios, as they will change as a subdivision or apartment complex ages.

Ratios of Students per Household – Multi-Family Housing

In multi-family apartment complexes, the ratios of students per unit ranged from **0.03** to **1.12** in specific complexes, and the weighted average throughout the District was **0.34** students per apartment unit. Approximately 7,995 units are occupied, with 2,688 students residing in those apartments.

The highest ratios of students per occupied home were found in the following apartments:

Planning Unit	Development	Ratio
68	Rosslyn Heights	1.12
59	Briar Park	0.83
64	Casa Nube en Montgomery	0.80
41A	Wimbledon	0.76

The ***lowest ratios*** were found in the following apartments:

Planning Unit	Development	Ratio
46	Waterman Crossing	0.03
46	Bridgewater Landing Condos	0.06
46	Trophy Club Condos	0.10

Also included in this chapter is a chart detailing the trends in ratios of students per household since July, 2003. The ratios have fluctuated between an average of .59 and .71 over the years, depending, in part, on which subdivisions were measured for any given period of time.



Klein ISD: Ratio of Students per Single Family Home by Subdivision

Planning Unit	Subdivision	Street Name	Total Ratio	# of Students	# of Homes	PK-5th Ratio	PK-5th Students	6th-8th Ratio	6th-8th Students	9th-12th Ratio	9th-12th Students
3C	Albury Trails Estates	Ancient Lore	0.17	1	6	0.17	1	0.00	0	0.00	0
		Magic Spell	0.00	0	2	0.00	0	0.00	0	0.00	0
		Maidenfair	0.09	1	11	0.09	1	0.00	0	0.00	0
		Roundtable	0.67	2	3	0.33	1	0.00	0	0.33	1
		Weighted Ratio:	0.18	4	22	0.14	75%	0.00	0%	0.05	25%
58	Ash Creek	Woodland Glade	1.23	37	30	0.73	22	0.27	8	0.23	7
		Sunny Creek	0.57	8	14	0.21	3	0.07	1	0.29	4
		Golden Stream	1.33	44	33	0.58	19	0.24	8	0.52	17
		Weighted Ratio:	1.16	89	77	0.57	49%	0.22	19%	0.36	31%
5D	Ashford Place	Northam	0.58	30	52	0.23	12	0.13	7	0.21	11
		Bressingham	0.87	27	31	0.39	12	0.13	4	0.35	11
		Elgar	0.73	11	15	0.53	8	0.13	2	0.07	1
		Hemington	0.46	12	26	0.23	6	0.04	1	0.19	5
		Weighted Ratio:	0.65	80	124	0.31	48%	0.11	18%	0.23	35%
1D	Auburn Lakes - Auburn Lakes Estates	Thorton Knolls	0.14	2	14	0.00	0	0.07	1	0.07	1
		Green Gable Manor	1.14	8	7	0.57	4	0.14	1	0.43	3
		Pennwell	0.00	0	2	0.00	0	0.00	0	0.00	0
		Weighted Ratio:	0.43	10	23	0.17	40%	0.09	20%	0.17	40%
1D	Auburn Lakes - Auburn Lakes Pines	Stone Hill	0.45	9	20	0.15	3	0.15	3	0.15	3
		Knob Pines	0.80	28	35	0.71	25	0.03	1	0.06	2
		Whistling Pines	0.35	6	17	0.18	3	0.06	1	0.12	2
		Hawthorne Blossom	0.86	12	14	0.57	8	0.14	2	0.14	2
		Weighted Ratio:	0.64	55	86	0.45	71%	0.08	13%	0.10	16%



Klein ISD: Ratio of Students per Single Family Home by Subdivision

Planning Unit	Subdivision	Street Name	Total Ratio	# of Students	# of Homes	PK-5th		6th-8th		9th-12th	
						Ratio	Students	Ratio	Students	Ratio	Students
1D	Auburn Lakes - Auburn Lakes Reserve	Auburn Bend	0.56	15	27	0.37	10	0.00	0	0.19	5
		Northcrest	1.33	28	21	0.52	11	0.24	5	0.57	12
		Pine Reserve	0.30	6	20	0.20	4	0.05	1	0.05	1
		Pine Arrow	0.75	9	12	0.42	5	0.17	2	0.17	2
		Weighted Ratio: 0.73	58	80	0.38	52%	0.10	14%	0.25	34%	
1D	Auburn Lakes - Auburn Lakes Retreat	Carrick Bend	0.38	8	21	0.00	0	0.14	3	0.24	5
		Pelham Chase	0.38	5	13	0.15	2	0.00	0	0.23	3
		Genesse Valley	0.85	11	13	0.15	2	0.23	3	0.46	6
		Firebrook	0.70	7	10	0.50	5	0.20	2	0.00	0
		Weighted Ratio: 0.54	31	57	0.16	29%	0.14	26%	0.04	45%	
1A	Auburn Lakes - The Courts at Auburn Lakes	Bow Wood	0.11	2	18	0.00	0	0.00	0	0.11	2
		Arcane	0.10	3	30	0.10	3	0.00	0	0.00	0
		Weighted Ratio: 0.10	5	48	0.06	60%	0.00	0%	0.04	40%	
1D	Auburn Lakes - The Village	Holden Mills	0.76	22	29	0.34	10	0.21	6	0.21	6
		Quiet Pointe	0.47	9	19	0.32	6	0.11	2	0.05	1
		Morning Song	0.00	0	11	0.00	0	0.00	0	0.00	0
		Weighted Ratio: 0.53	31	59	0.27	52%	0.14	26%	0.12	23%	
1A	Augusta Pines - The Estates	Raes Creek	0.67	4	6	0.00	0	0.50	3	0.17	1
		Fort Augusta	3.00	3	1	2.00	2	0.00	0	1.00	1
		Weighted Ratio: 1.00	7	7	0.29	29%	0.43	43%	0.29	29%	
1A	Augusta Pines - The Gardens	Ikes Pond	0.00	0	1	0.00	0	0.00	0	0.00	0
		Faldo	0.00	0	1	0.00	0	0.00	0	0.00	0
		Weighted Ratio: 0.00	0	2	0.00	0%	0.00	0%	0.00	0%	



Klein ISD: Ratio of Students per Single Family Home by Subdivision

Planning Unit	Subdivision	Street Name	Total Ratio	# of Students	# of Homes	PK-5th		6th-8th		9th-12th	
						Ratio	Students	Ratio	Students	Ratio	Students
1A	Augusta Pines - The Greens	Sands Terrace	0.17	4	23	0.04	1	0.04	1	0.09	2
		Par Point	0.00	0	10	0.00	0	0.00	0	0.00	0
		Long Iron Ct	0.00	0	9	0.00	0	0.00	0	0.00	0
		Goldcrest Ct	0.00	0	7	0.00	0	0.00	0	0.00	0
		Weighted Ratio: 0.08		4	49		25%		25%		50%
1A	Augusta Pines - Augusta Creek Pointe	Hogan Bridge	0.67	6	9	0.56	5	0.11	1	0.00	0
		Ikes Tree	0.09	1	11	0.09	1	0.00	0	0.00	0
		Weighted Ratio: 0.35		7	20		86%		14%		0%
1A	Augusta Pines - Augusta Pines	Augusta Pines Pkwy	0.71	5	7	0.14	1	0.29	2	0.29	2
		Bent Green	0.80	4	5	0.60	3	0.00	0	0.20	1
		Fairway Cove	1.00	3	3	0.33	1	0.33	1	0.33	1
		Weighted Ratio: 0.80		12	15		42%		25%		33%
					7	26		57%		14%	
1A	Augusta Pines - Paloma Creek	Misty Mountain Trl	1.00	2	2	1.00	2	0.00	0	0.00	0
		Augusta Falls	0.00	0	6	0.00	0	0.00	0	0.00	0
		Windsor Canyon	0.18	3	17	0.12	2	0.00	0	0.06	1
		Sharpree Ct	2.00	2	1	0.00	0	1.00	1	1.00	1
		Weighted Ratio: 0.27		7	26		57%		14%		29%
1A	Augusta Pines - Shadow Creek Estates	Post Shadow Estates Ct	0.00	0	2	0.00	0	0.00	0	0.00	0
		Post Shadow Estates Dr	0.20	1	5	0.20	1	0.00	0	0.00	0
		Pleasant Shadows	0.00	0	1	0.00	0	0.00	0	0.00	0
		Weighted Ratio: 0.13		1	8		100%		0%		0%
1A	Augusta Pines - Shadow Creek Estates - Villas	Shadow Creek Villa Loop	0.40	2	5	0.20	1	0.20	1	0.00	0
		Shadow Creek Ridge	0.00	0	7	0.00	0	0.00	0	0.00	0
		Weighted Ratio: 0.17		2	12		50%		50%		0%
1A	Augusta Pines - The Legends at Augusta Pines	Firehome Creek	0.75	3	4	0.00	0	0.50	2	0.25	1
		Weighted Ratio: 0.75		3	4		0	0.50	2	0.25	1



Klein ISD: Ratio of Students per Single Family Home by Subdivision

Planning Unit	Subdivision	Street Name	Total Ratio	# of Students	# of Homes	PK-5th		6th-8th		9th-12th	
						Ratio	Students	Ratio	Students	Ratio	Students
				3	4		0%		67%		33%
1A	Augusta Pines - The Preserve - Oak Hill Estates	Hideaway Lake	0.43	10	23	0.13	3	0.13	3	0.17	4
		Wooded Way	1.46	19	13	0.62	8	0.31	4	0.54	7
		Piney Bend Ct	0.78	7	9	0.44	4	0.11	1	0.22	2
		Weighted Ratio: 0.80				0.33		0.18		0.29	
				36	45		42%		22%		36%
1A	Augusta Pines - The Preserve - Oak Trace	Edenwood	0.60	15	25	0.32	8	0.08	2	0.20	5
		Piney Heights	0.48	11	23	0.30	7	0.13	3	0.04	1
		Hideaway Run	0.67	16	24	0.46	11	0.08	2	0.13	3
		Metzler Creek	0.42	11	26	0.19	5	0.04	1	0.19	5
		Weighted Ratio: 0.54				0.32		0.08		0.14	
				53	98		58%		15%		26%
1A	Augusta Pines - The Preserve - Oakmont Village	Oak Knot	0.13	2	15	0.00	0	0.00	0	0.13	2
		Oak Star	0.22	2	9	0.22	2	0.00	0	0.00	0
		Oak Villa Dr	0.23	3	13	0.15	2	0.00	0	0.08	1
		Oak Plains	0.50	2	4	0.50	2	0.00	0	0.00	0
		Weighted Ratio: 0.22				0.15		0.00		0.07	
				9	41		67%		0%		33%
1A	Augusta Pines - The Villas	Murflid Bend	0.00	0	10	0.00	0	0.00	0	0.00	0
		Nantucket Pointe	0.00	0	4	0.00	0	0.00	0	0.00	0
		Weighted Ratio: 0.00				0.00		0.00		0.00	
				0	14		0%		0%		0%
31F	Bainbridge Estates	Bremerton	0.75	6	8	0.38	3	0.00	0	0.38	3
		Puget	0.44	7	16	0.19	3	0.13	2	0.13	2
		Whidbey Ct	0.86	6	7	0.43	3	0.14	1	0.29	2
				19	31		47%		16%		37%
				0	14		0%		0%		0%



Klein ISD: Ratio of Students per Single Family Home by Subdivision

Planning Unit	Subdivision	Street Name	Total Ratio	# of Students	# of Homes	PK-5th		6th-8th		9th-12th	
						Ratio	Students	Ratio	Students	Ratio	Students
6C	Bella Serra	Bella Luna	0.45	9	20	0.20	4	0.15	3	0.10	2
		Bella Mountain	0.96	25	26	0.46	12	0.19	5	0.31	8
		Bella Noche	0.74	26	35	0.37	13	0.14	5	0.23	8
		Bella Jess	0.38	10	26	0.27	7	0.00	0	0.12	3
		Weighted Ratio: 0.65	70	107	0.34	51%	19%	0.12	30%		
47	Big Cypress Hill Estates	Cashel Glen	0.44	7	16	0.19	3	0.06	1	0.19	3
		Weighted Ratio: 0.44	7	16	0.19	43%	14%	0.06	43%		
60	Blue Creek	Miller House	0.80	33	41	0.46	19	0.22	9	0.12	5
		Bay Lodge	1.26	34	27	0.78	21	0.19	5	0.30	8
		Blue Creek Ranch	1.43	60	42	0.67	28	0.36	15	0.40	17
		Weighted Ratio: 1.15	127	110	0.62	54%	23%	0.26	24%		
5B	Boudreaux Gardens MHP	Sharon Pkwy	0.29	4	14	0.21	3	0.07	1	0.00	0
		Candy Ct	0.83	10	12	0.33	4	0.17	2	0.33	4
		Margie Ct	0.75	9	12	0.25	3	0.42	5	0.08	1
		Weighted Ratio: 0.61	23	38	0.26	43%	35%	0.21	22%		
19A	Brentwood Lakes	Brentwood Lakes	0.25	2	8	0.13	1	0.00	0	0.13	1
		Courtney Pine	0.47	8	17	0.24	4	0.00	0	0.24	4
		Victoria Lakes	0.21	3	14	0.07	1	0.00	0	0.14	2
		Weighted Ratio: 0.33	13	39	0.15	46%	0%	0.00	54%		
13B	Bridgestone Lakes	Bridgestone Pine	0.93	39	42	0.31	13	0.26	11	0.36	15
		Bridgestone Cliff	1.00	10	10	0.50	5	0.20	2	0.30	3
		Bridgestone Point	3.50	7	2	0.50	1	0.50	1	2.50	5
		Bridgestone Ridge	0.67	14	21	0.33	7	0.10	2	0.24	5
		Weighted Ratio: 0.93	70	75	0.35	37%	23%	0.21	40%		



Klein ISD: Ratio of Students per Single Family Home by Subdivision

Planning Unit	Subdivision	Street Name	Total Ratio	# of Students	# of Homes	PK-5th		6th-8th		9th-12th	
						Ratio	Students	Ratio	Students	Ratio	Students
4B	Champion Lakes Estates	Lakeway Park	0.56	5	9	0.11	1	0.22	2	0.22	2
		Champions Lakeway	0.57	12	21	0.14	3	0.14	3	0.29	6
		Champions Lakes	0.00	0	2	0.00	0	0.00	0	0.00	0
		Justinwood Point	2.00	2	1	2.00	2	0.00	0	0.00	0
		Weighted Ratio:	0.58	19	33	0.18		0.15		0.24	
25	Champion Pines	Champion Pines	0.70	7	10	0.30	3	0.00	0	0.40	4
		Theissetta	0.70	7	10	0.40	4	0.20	2	0.10	1
		Timberwork	0.50	3	6	0.17	1	0.00	0	0.33	2
		Weighted Ratio:	0.65	17	26	0.31		0.08		0.27	
						0.47%				12%	
23B	Champion Springs	Mountain Crest	0.79	22	28	0.21	6	0.21	6	0.36	10
		Carroll Lake	0.57	16	28	0.18	5	0.14	4	0.25	7
		Granite Gorge	0.33	10	30	0.27	8	0.03	1	0.03	1
		Desert Palms	0.44	7	16	0.31	5	0.00	0	0.13	2
		Weighted Ratio:	0.54	55	102	0.24		0.11		0.20	
						44%				20%	
25	Champion Woods Estates	Oak Moss (7500-7899)	0.14	1	7	0.14	1	0.00	0	0.00	0
		Fondness Park	0.63	5	8	0.25	2	0.00	0	0.38	3
		Weighted Ratio:	0.40	6	15	0.20		0.00		0.20	
						50%				0%	
55B	Champion Woods Estates - The Reserve	Noah	0.57	4	7	0.00	0	0.14	1	0.43	3
		Lapeer Ct	0.22	2	9	0.11	1	0.11	1	0.00	0
		Dayhill	0.55	11	20	0.25	5	0.15	3	0.15	3
		Weighted Ratio:	0.47	17	36	0.17		0.14		0.17	
						35%				29%	
25	Champion Woods Estates - The Retreat	Waning Star	0.00	0	25	0.00	0	0.00	0	0.00	0
		Barrett's Crossing	0.00	0	11	0.00	0	0.00	0	0.00	0
		Weighted Ratio:	0.00	0	36	0.00		0.00		0.00	
						0%				0%	



Klein ISD: Ratio of Students per Single Family Home by Subdivision

Planning Unit	Subdivision	Street Name	Total Ratio	# of Students	# of Homes	PK-5th Ratio	PK-5th Students	6th-8th Ratio	6th-8th Students	9th-12th Ratio	9th-12th Students
55B	Champions Crossing	Green Shoals	0.46	18	39	0.21	8	0.08	3	0.18	7
		Marston River	0.27	6	22	0.14	3	0.00	0	0.14	3
		Golden Lodge	0.52	16	31	0.19	6	0.16	5	0.16	5
		Star Shadow	0.63	24	38	0.39	15	0.11	4	0.13	5
		Weighted Ratio:	0.49	64	130	0.25	50%	0.09	19%	0.15	31%
23C	Champions Trail	Grove Mesa	0.27	4	15	0.20	3	0.00	0	0.07	1
		Rex Creek	0.20	4	20	0.00	0	0.10	2	0.10	2
		MacKenzie Mesa	0.43	6	14	0.29	4	0.07	1	0.07	1
		Darbey Trace	0.50	6	12	0.25	3	0.00	0	0.25	3
		Weighted Ratio:	0.33	20	61	0.16	50%	0.05	15%	0.11	35%
20B	Charterwood	Sugar Tree Dr	0.82	18	22	0.45	10	0.09	2	0.27	6
		Magnolia Ridge	0.65	45	69	0.33	23	0.19	13	0.13	9
		Sundew	0.50	12	24	0.13	3	0.13	3	0.25	6
			Weighted Ratio:	0.65	75	115	0.31	48%	0.16	24%	0.18
65	Cherie Cove	Cherie Cove	0.50	2	4	0.00	0	0.25	1	0.25	1
		Cherie Crest	1.10	55	50	0.42	21	0.30	15	0.38	19
		Weighted Ratio:	1.06	57	54	0.39	37%	0.30	28%	0.37	35%
23B	Colony Creek Village	Towerstone	0.63	22	35	0.34	12	0.14	5	0.14	5
		Wandswoth	0.73	33	45	0.36	16	0.20	9	0.18	8
		Ashbridge	0.50	10	20	0.15	3	0.15	3	0.20	4
			Weighted Ratio:	0.65	65	100	0.31	48%	0.17	26%	0.17
57B	Copper Falls	Madison Kendall	1.29	27	21	0.62	13	0.29	6	0.38	8
		Taylor Leigh	1.15	30	26	0.42	11	0.19	5	0.54	14
		Kylie Springs	1.35	35	26	0.62	16	0.27	7	0.46	12
			Weighted Ratio:	1.26	92	73	0.55	43%	0.25	20%	0.47



Klein ISD: Ratio of Students per Single Family Home by Subdivision

Planning Unit	Subdivision	Street Name	Total		# of Homes	PK-5th		6th-8th		9th-12th	
			Ratio	# of Students		Ratio	Students	Ratio	Students	Ratio	Students
5A	Cottage Gardens	Elderberry Park	0.72	28	39	0.33	13	0.18	7	0.21	8
		Sweet Blossom	0.96	26	27	0.59	16	0.19	5	0.19	5
		Cinnaberry	0.42	5	12	0.25	3	0.08	1	0.08	1
		Checkerberry Park	0.77	23	30	0.43	13	0.10	3	0.23	7
		Weighted Ratio:	0.76	82	108	0.42	55%	0.15	20%	0.19	26%
3C	Country Club Greens	Country Club Green Cr	0.33	2	6	0.17	1	0.17	1	0.00	0
		Country Club Green Dr	0.82	64	78	0.41	32	0.19	15	0.22	17
		Country Club Green Way	1.00	11	11	0.45	5	0.18	2	0.36	4
		Weighted Ratio:	0.81	77	95	0.40	49%	0.19	23%	0.22	27%
31A	Country Lake Estates	Country Mountain	0.00	0	16	0.00	0	0.00	0	0.00	0
		Country Canyon	0.31	4	13	0.31	4	0.00	0	0.00	0
		Country Pines	0.00	0	25	0.00	0	0.00	0	0.00	0
		Country Trails	0.03	1	33	0.03	1	0.00	0	0.00	0
		Weighted Ratio:	0.06	5	87	0.06	100%	0.00	0%	0.00	0%
12A	Covington Bridge	Rose Quartz	0.55	11	20	0.15	3	0.15	3	0.25	5
		Crest Bridge	0.00	0	20	0.00	0	0.00	0	0.00	0
		Stoneydale	1.15	23	20	0.55	11	0.40	8	0.20	4
		Weighted Ratio:	0.57	34	60	0.23	41%	0.18	32%	0.15	26%
6B	Creekside Place	Creekside Gate	0.81	13	16	0.38	6	0.19	3	0.25	4
		Bank Shade	0.94	15	16	0.56	9	0.25	4	0.13	2
		Palomino Creek	1.13	18	16	0.38	6	0.31	5	0.44	7
		Weighted Ratio:	0.96	46	48	0.44	46%	0.25	26%	0.27	28%
13B	Cricket Hill Estates MHP	N Cricket	0.33	4	12	0.25	3	0.08	1	0.00	0
		S Cricket	0.56	5	9	0.33	3	0.11	1	0.11	1
		G Cricket	0.00	0	12	0.00	0	0.00	0	0.00	0
		Weighted Ratio:	0.27	9	33	0.18	67%	0.06	22%	0.03	11%



Klein ISD: Ratio of Students per Single Family Home by Subdivision

Planning Unit	Subdivision	Street Name	Total Ratio	# of Students	# of Homes	PK-5th Ratio	PK-5th Students	6th-8th Ratio	6th-8th Students	9th-12th Ratio	9th-12th Students
33A	Cypress Forest Lakes	Santa Elena Canyon	0.33	2	6	0.00	0	0.17	1	0.17	1
		Panther Peak	1.43	10	7	0.86	6	0.14	1	0.43	3
		Lost Mine	0.36	4	11	0.27	3	0.00	0	0.09	1
		Emory Trail	0.62	8	13	0.23	3	0.08	1	0.31	4
		Weighted Ratio:	0.65	24	37	0.32	50%	0.08	13%	0.24	38%
39	Cypress Trace	Cypress Mound	1.00	8	8	0.63	5	0.25	2	0.13	1
		Cypresswell	0.80	4	5	0.40	2	0.40	2	0.00	0
		Cypress Wick Ct	0.00	0	8	0.00	0	0.00	0	0.00	0
		Deleon Trails	1.00	10	10	0.20	2	0.20	2	0.60	6
		Weighted Ratio:	0.71	22	31	0.29	41%	0.19	27%	0.23	32%
31C 34B 34D 35A 35B 36 37B	Cypresswood	El James (3400-3599)	0.56	10	18	0.22	4	0.00	0	0.33	6
		Blue Lake (3640-3699)	0.55	12	22	0.23	5	0.00	0	0.32	7
		Blue Cypress	0.86	36	42	0.21	9	0.19	8	0.45	19
		Arbor Terrace	0.72	18	25	0.24	6	0.24	6	0.24	6
		Marywood (3600-3699)	0.57	16	28	0.14	4	0.21	6	0.21	6
		Lost Oak (3600-3699)	0.54	15	28	0.43	12	0.07	2	0.04	1
		El James (3800-3999)	0.68	15	22	0.45	10	0.05	1	0.18	4
		Sorrel Ridge	1.09	25	23	0.43	10	0.26	6	0.39	9
		Cypress Lake	0.49	24	49	0.12	6	0.16	8	0.20	10
		Oxhill	0.67	26	39	0.28	11	0.18	7	0.21	8
		Rolling Terrace (4000-4099)	0.93	28	30	0.33	10	0.20	6	0.40	12
Weighted Ratio:	0.69	225	326	0.27	39%	0.15	22%	0.27	39%		
43A	Cypresswood Forest	Fonthill (8000-8099)	0.89	8	9	0.56	5	0.11	1	0.22	2
		Friar Ct	0.13	1	8	0.13	1	0.00	0	0.00	0
		Lobo (16200-16399)	1.00	9	9	0.78	7	0.11	1	0.11	1
Weighted Ratio:	0.69	18	26	0.50	72%	0.08	11%	0.12	17%		



Klein ISD: Ratio of Students per Single Family Home by Subdivision

Planning Unit	Subdivision	Street Name	Total Ratio	# of Students	# of Homes	PK-5th Ratio	PK-5th Students	6th-8th Ratio	6th-8th Students	9th-12th Ratio	9th-12th Students
31D	Cypresswood Glen - The Park at Cypresswood Glen	Bonds Creek	0.64	14	22	0.23	5	0.14	3	0.27	6
		Markspring	0.42	5	12	0.08	1	0.08	1	0.25	3
		Benwest Ct	0.40	8	20	0.05	1	0.05	1	0.30	6
		Weighted Ratio: 0.50	27	54	0.13	5	0.09	19%	56%		
11A	Dove Meadows	Rotherhan	0.50	12	24	0.21	5	0.04	1	0.25	6
		Glenbranch	0.41	36	88	0.14	12	0.13	11	0.15	13
		Rldgewood	0.28	5	18	0.11	2	0.00	0	0.17	3
		Weighted Ratio: 0.41	53	130	0.15	36%	23%	42%			
32E	Estates at Creeks End	Creek Bend	0.75	27	36	0.25	9	0.22	8	0.28	10
		Brittany Creek	0.67	29	43	0.28	12	0.16	7	0.23	10
		Creek Run	0.50	9	18	0.28	5	0.11	2	0.11	2
		Weighted Ratio: 0.67	65	97	0.27	40%	26%	34%			
3C	Estates at Willow Creek	Boulder Springs	0.78	7	9	0.56	5	0.11	1	0.11	1
		Windy Brook	0.29	2	7	0.14	1	0.14	1	0.00	0
		Summer Breeze	0.57	4	7	0.43	3	0.14	1	0.00	0
		Rumbling Creek	0.00	0	8	0.00	0	0.00	0	0.00	0
Weighted Ratio: 0.42	13	31	0.29	69%	23%	8%					
41B	Estates at Wimbledon Champions	Connors Ace	0.00	0	21	0.00	0	0.00	0	0.00	0
		Cash Oaks	0.08	2	26	0.04	1	0.04	1	0.00	0
		Kodes Clay	1.11	10	9	0.11	1	0.44	4	0.56	5
		Weighted Ratio: 0.21	12	56	0.04	17%	42%	42%			
9B	Five Oaks MHP	Sitca	1.19	50	42	0.57	24	0.31	13	0.31	13
		Margo	1.17	49	42	0.81	34	0.19	8	0.17	7
		Five Oaks	1.05	41	39	0.51	20	0.21	8	0.33	13
		Weighted Ratio: 1.14	140	123	0.63	56%	21%	24%			



Klein ISD: Ratio of Students per Single Family Home by Subdivision

Planning Unit	Subdivision	Street Name	Total		# of Homes	# of Students		PK-5th		6th-8th		9th-12th	
			Ratio	Ratio		Students	Homes	Ratio	Students	Ratio	Students	Ratio	Students
10	Forest Ridge	Peachstone Pl (3100-3199)	0.25		24	6	24	0.04	1	0.08	2	0.13	3
		Ribbon Creek (3100-3199)	0.33		24	8	24	0.13	3	0.04	1	0.17	4
		Beacon Cove (3100-3199)	0.17		30	5	30	0.00	0	0.03	1	0.13	4
		Greengate	2.00		14	28	14	0.93	13	0.36	5	0.71	10
		Weighted Ratio:	0.51		92	47	92	0.18	36%	0.10	19%	0.23	45%
64	Garden City Park	Cliffmarshall	0.64		28	18	28	0.29	8	0.18	5	0.18	5
		Proswimmer	0.38		34	13	34	0.15	5	0.12	4	0.12	4
		Stallings	0.45		73	33	73	0.16	12	0.12	9	0.16	12
		Weighted Ratio:	0.47		135	64	135	0.19	39%	0.13	28%	0.16	33%
18A	Glenn Haven Estates	Glenn Haven Estates Blvd	0.90		49	44	49	0.45	22	0.20	10	0.24	12
		Spring Heather	0.61		23	14	23	0.22	5	0.09	2	0.30	7
		Glenn Leigh	0.91		22	20	22	0.45	10	0.05	1	0.41	9
		Glenn Elm	0.54		26	14	26	0.12	3	0.19	5	0.23	6
		Weighted Ratio:	0.77		120	92	120	0.33	43%	0.15	20%	0.28	37%
5C	Glennloch Farms - Arbors	Muirwood Place	0.00		22	0	22	0.00	0	0.00	0	0.00	0
		Catalina Leaf	0.00		12	0	12	0.00	0	0.00	0	0.00	0
		Candlewood Place	0.00		8	0	8	0.00	0	0.00	0	0.00	0
		Old Timber	0.00		7	0	7	0.00	0	0.00	0	0.00	0
		Weighted Ratio:	0.00		49	0	49	0.00	0%	0.00	0%	0.00	0%
5F	Glennloch Farms - Dove Manor	Tidy Tips	0.83		30	25	30	0.53	16	0.13	4	0.17	5
		Blue Crulls	0.39		23	9	23	0.22	5	0.09	2	0.09	2
		Prairie Clover	1.00		18	18	18	0.39	7	0.33	6	0.28	5
		Rose Dawn	0.64		59	38	59	0.44	26	0.15	9	0.05	3
		Weighted Ratio:	0.69		130	90	130	0.42	60%	0.16	23%	0.12	17%



Klein ISD: Ratio of Students per Single Family Home by Subdivision

Planning Unit	Subdivision	Street Name	Total Ratio	# of Students	# of Homes	PK-5th		6th-8th		9th-12th	
						Ratio	Students	Ratio	Students	Ratio	Students
5F	Gleannloch Farms - Gleannfield	Oxalis	0.43	3	7	0.00	0	0.14	1	0.29	2
		Cristiwood	1.25	15	12	0.83	10	0.25	3	0.17	2
		Woodberry Manor	0.63	12	19	0.42	8	0.05	1	0.16	3
		Edgeloch (9300-9699)	0.28	15	53	0.15	8	0.08	4	0.06	3
		Weighted Ratio: 0.49	45	91	0.29	58%	0.10	20%	0.11	22%	
5F	Gleannloch Farms - Gleannmanor	Huckinson	0.76	13	17	0.29	5	0.29	5	0.18	3
		Fernwillow	0.62	26	42	0.36	15	0.14	6	0.12	5
		Leitchfield Hollow	1.13	34	30	0.63	19	0.27	8	0.23	7
		Gunters Ridge	0.59	16	27	0.41	11	0.11	3	0.07	2
		Weighted Ratio: 0.77	89	116	0.43	56%	0.19	25%	0.15	19%	
5F	Gleannloch Farms - Havenwood	Gavin court	0.00	0	4	0.00	0	0.00	0	0.00	0
		Grable Cove	0.12	3	26	0.08	2	0.00	0	0.04	1
		Primos Place	0.00	0	8	0.00	0	0.00	0	0.00	0
		Day Trail Ln	0.00	0	5	0.00	0	0.00	0	0.00	0
		Weighted Ratio: 0.07	3	43	0.05	67%	0.00	0%	0.02	33%	
5C	Gleannloch Farms - Lake Estates	Sotherloch Lake (9304-9799)	0.30	13	43	0.16	7	0.07	3	0.07	3
		Swansea Bay (9300-9499)	1.45	16	11	0.45	5	0.55	6	0.45	5
		Cardigan Bay (1300-1399)	1.06	19	18	0.28	5	0.33	6	0.44	8
		Weighted Ratio: 0.67	48	72	0.24	35%	0.21	31%	0.22	33%	
5C	Gleannloch Farms - Manor Estates	Manor Lake Estates (1-199)	0.89	42	47	0.49	23	0.21	10	0.19	9
		Kerloch Point	1.00	13	13	0.31	4	0.38	5	0.31	4
		Lochbury (1-99)	2.63	21	8	1.38	11	0.63	5	0.63	5
		Weighted Ratio: 1.12	76	68	0.56	50%	0.29	26%	0.26	24%	



Klein ISD: Ratio of Students per Single Family Home by Subdivision

Planning Unit	Subdivision	Street Name	Total Ratio	# of Students	# of Homes	PK-5th		6th-8th		9th-12th	
						Ratio	Students	Ratio	Students	Ratio	Students
5H	Glennloch Farms - The Retreat at Glennloch Farms	Ketan Loch	0.13	1	8	0.13	1	0.00	0	0.00	0
		Jaya Loch	0.00	0	8	0.00	0	0.00	0	0.00	0
		Syndee Loch	0.13	1	8	0.13	1	0.00	0	0.00	0
		Sunset Loch	0.04	1	24	0.04	1	0.00	0	0.00	0
		Weighted Ratio: 0.06	3	48	100%	0%	0%				
15H	Gosling Pines	Mandarin Glen	0.32	7	22	0.18	4	0.14	3	0.00	0
		Snow Goose	0.45	10	22	0.14	3	0.23	5	0.09	2
		Redcrested Glen	0.43	3	7	0.43	3	0.00	0	0.00	0
		Lakota Trails	0.79	22	28	0.46	13	0.14	4	0.18	5
		Weighted Ratio: 0.53	42	79	55%	29%	17%				
49	Greenwood Forest	Pebble Springs	0.36	42	118	0.14	17	0.07	8	0.14	17
		Boyce Springs	0.34	41	121	0.20	24	0.07	8	0.07	9
		Havenwoods	0.53	62	118	0.24	28	0.08	10	0.20	24
		Pine Arbor	0.31	38	124	0.11	14	0.09	11	0.10	13
		Green Springs	0.31	39	124	0.10	12	0.08	10	0.14	17
Weighted Ratio: 0.37	222	605	43%	21%	36%						
55C	Hamill Ranch	Hosanna	3.00	3	1	3.00	3	0.00	0	0.00	0
		Hamill Ranch	1.33	8	6	1.17	7	0.00	0	0.17	1
		Weighted Ratio: 1.57	11	7	91%	0%	9%				
46	Huntwick Forest	Belhaven	0.08	1	13	0.08	1	0.00	0	0.00	0
		Royal Walk	0.09	1	11	0.00	0	0.00	0	0.09	1
		Fountainbridge	0.27	3	11	0.27	3	0.00	0	0.00	0
		Weighted Ratio: 0.14	5	35	80%	0%	20%				



Klein ISD: Ratio of Students per Single Family Home by Subdivision

Planning Unit	Subdivision	Street Name	Total		# of Homes	PK-5th		6th-8th		9th-12th			
			Ratio	# of Students		Ratio	Students	Ratio	Students	Ratio	Students		
5E	Inverness	Little Green	0.50	4	8	0.50	4	0.00	0	0.00	0		
		Blanchfield Ct	0.50	5	10	0.00	0	0.40	4	0.10	1		
		Torrisdale	0.36	5	14	0.14	2	0.07	1	0.14	2		
		Kinnet	0.47	9	19	0.26	5	0.05	1	0.16	3		
		Weighted Ratio: 0.45	23	51	0.22	48%	26%	0.12	26%				
65	Inwood North	Fair Forest (5400-5699)	0.56	32	57	0.19	11	0.09	5	0.28	16		
		Fairview Forest (5400-5699)	0.98	56	57	0.54	31	0.16	9	0.28	16		
		Canyon Forest	0.69	42	61	0.23	14	0.11	7	0.34	21		
		Greenhill Forest	0.64	39	61	0.36	22	0.13	8	0.15	9		
		Ogden Forest	0.35	13	37	0.16	6	0.14	5	0.05	2		
67A	Inwood North	Maywood Forest	0.56	23	41	0.17	7	0.15	6	0.24	10		
		Weighted Ratio: 0.65	205	314	0.29	44%	0.13	20%	0.24	36%			
		2	Klein Meadows	Silent Meadow (25000-25099)	1.57	11	7	0.43	3	0.57	4	0.57	4
				Iberis Meadows	1.00	4	4	0.50	2	0.25	1	0.25	1
				Sorrel Meadows	0.57	25	44	0.30	13	0.16	7	0.11	5
Barnby (25200-25499)	0.78			49	63	0.35	22	0.21	13	0.22	14		
Weighted Ratio: 0.75	89			118	0.34	45%	0.21	28%	0.20	27%			
56A	Kleinbrook	Verdenbruk	0.92	24	26	0.54	14	0.15	4	0.23	6		
		Kleindale	1.00	9	9	0.78	7	0.22	2	0.00	0		
		Essenbruk	1.04	25	24	0.33	8	0.17	4	0.54	13		
		Kleinbrook	0.92	36	39	0.44	17	0.21	8	0.28	11		
		Kleingate	0.23	6	26	0.15	4	0.00	0	0.08	2		
57A	Kleinbrook	Kleinway	0.97	67	69	0.36	25	0.29	20	0.32	22		
		Weighted Ratio: 0.87	167	193	0.39	45%	0.20	23%	0.28	32%			
		43A	Kleinwood	Fountaingrove	0.94	16	17	0.47	8	0.29	5	0.18	3
				Lichfield	0.00	0	22	0.00	0	0.00	0	0.00	0
				Felliciana	0.40	8	20	0.10	2	0.10	2	0.20	4
Weighted Ratio: 0.41	24			59	0.17	42%	0.12	29%	0.12	29%			



Klein ISD: Ratio of Students per Single Family Home by Subdivision

Planning Unit	Subdivision	Street Name	Total Ratio	# of Students	# of Homes	PK-5th		6th-8th		9th-12th	
						Ratio	Students	Ratio	Students	Ratio	Students
40	Lafone Estates	Lafone	0.88	14	16	0.38	6	0.25	4	0.25	4
		Weighted Ratio: 0.88									
6C	Lakes at Avalon Village	Avalon Queen	0.80	33	41	0.29	12	0.24	10	0.27	11
		Ulther	0.64	7	11	0.18	2	0.27	3	0.18	2
		Derkadine	0.00	0	10	0.00	0	0.00	0	0.00	0
		Avalon Aqua	0.93	13	14	0.36	5	0.29	4	0.29	4
		Weighted Ratio: 0.70									
				14	16		43%		29%		29%
5H	Lakes at Gleanloch Farms	Yorkshire Manor	0.86	19	22	0.68	15	0.14	3	0.05	1
		Scoresby Manor	1.20	12	10	0.90	9	0.30	3	0.00	0
		Scoresby Manor Ct	0.62	8	13	0.31	4	0.23	3	0.08	1
		Weighted Ratio: 0.87									
						39	45		36%		32%
1A	Londonderry	Shalford	0.69	22	32	0.25	8	0.31	10	0.13	4
		Aughton Dr	0.63	29	46	0.28	13	0.15	7	0.20	9
		Burgh Castle	0.76	26	34	0.26	9	0.26	9	0.24	8
		Weighted Ratio: 0.69									
				77	112		72%		23%		5%
32C	Louetta Glen	Treasure Mountain	0.40	6	15	0.07	1	0.13	2	0.20	3
		Cloverlea	0.00	0	13	0.00	0	0.00	0	0.00	0
		Louetta Point	0.62	8	13	0.23	3	0.31	4	0.08	1
		Weighted Ratio: 0.34									
				14	41		39%		34%		27%
32A	Louetta Lakes	Sandleigh	0.77	23	30	0.27	8	0.13	4	0.37	11
		Blue Fovant	0.53	8	15	0.20	3	0.27	4	0.07	1
		Tamerton	0.71	12	17	0.18	3	0.24	4	0.29	5
		Weighted Ratio: 0.69									
				43	62		29%		43%		29%
							33%		28%		40%



Klein ISD: Ratio of Students per Single Family Home by Subdivision

Planning Unit	Subdivision	Street Name	Total Ratio	# of Students	# of Homes	PK-5th Ratio	PK-5th Students	6th-8th Ratio	6th-8th Students	9th-12th Ratio	9th-12th Students
32A	Louetta Woods	Louetta Oak Dr	0.66	19	29	0.21	6	0.10	3	0.34	10
		Louetta Woods	0.68	17	25	0.48	12	0.08	2	0.12	3
		Louetta Falls	0.24	5	21	0.14	3	0.05	1	0.05	1
		Weighted Ratio: 0.55	41	75	0.28	6	0.08	1	0.19	3	
16	Lyndhurst Village	Lyndhurst Village	0.73	16	22	0.32	7	0.14	3	0.27	6
		Vanhorn	0.43	6	14	0.14	2	0.07	1	0.21	3
		Lewisham	0.14	1	7	0.00	0	0.14	1	0.00	0
		Tristandale	0.75	6	8	0.38	3	0.13	1	0.25	2
		Weighted Ratio: 0.57	29	51	0.24	1	0.12	1	0.22	1	2
20B	Majestic Oaks	Lausanne	0.81	22	27	0.37	10	0.15	4	0.30	8
		Cutten (15900-16099)	0.66	23	35	0.31	11	0.17	6	0.17	6
		Luxembourg	1.00	13	13	0.31	4	0.23	3	0.46	6
		Weighted Ratio: 0.77	58	75	0.33	4	0.17	3	0.27	3	6
46	Marble Gate Court	Marble Staff	0.00	0	9	0.00	0	0.00	0	0.00	0
		Rose Marble	0.00	0	8	0.00	0	0.00	0	0.00	0
		Marble Cottage	0.00	0	6	0.00	0	0.00	0	0.00	0
		Weighted Ratio: 0.00	0	23	0.00	0	0.00	0	0.00	0	0
13B	Meadow Hill Run	Falvel Sunset	0.96	26	27	0.59	16	0.15	4	0.22	6
		Falvel Sunrise	0.76	29	38	0.39	15	0.16	6	0.21	8
		Falvel Lake	0.56	29	52	0.31	16	0.08	4	0.17	9
		Falvel Cove	0.63	22	35	0.34	12	0.14	5	0.14	5
		Weighted Ratio: 0.70	106	152	0.39	12	0.13	5	0.18	5	5
19C	Memorial Creek	Memorial Creek	0.68	27	40	0.18	7	0.23	9	0.28	11
		Split Creek	0.65	11	17	0.24	4	0.12	2	0.29	5
		High Creek	0.67	8	12	0.00	0	0.25	3	0.42	5
Weighted Ratio: 0.67	46	69	0.16	0	0.20	3	0.30	3	5		
				46	69		24%		30%		46%



Klein ISD: Ratio of Students per Single Family Home by Subdivision

Planning Unit	Subdivision	Street Name	Total		# of Homes	PK-5th		6th-8th		9th-12th			
			Ratio	# of Students		Ratio	Students	Ratio	Students	Ratio	Students		
18A 18B 24A 24B 25	Memorial Northwest	Null	0.24	4	17	0.00	0	0.12	2	0.12	2		
		Downington	0.76	13	17	0.29	5	0.29	5	0.18	3		
		Shadow Valley	0.94	60	64	0.41	26	0.20	13	0.33	21		
		Vintage Wood	1.23	32	26	0.46	12	0.15	4	0.62	16		
		Oak Moss (7900-8299)	0.64	28	44	0.39	17	0.09	4	0.16	7		
		River Willow	0.32	12	38	0.05	2	0.11	4	0.16	6		
		Canyon Pine	0.36	8	22	0.09	2	0.14	3	0.14	3		
		Hertfordshire	0.73	16	22	0.27	6	0.18	4	0.27	6		
		Oxfordshire	0.45	20	44	0.34	15	0.07	3	0.05	2		
		Weighted Ratio:	0.66					0.29		0.14		0.22	
			193		294	44%		22%		34%			
4B	Memorial Springs	Melissa Springs	0.64	61	96	0.33	32	0.17	16	0.14	13		
		Elizabeths Glen	0.96	55	57	0.39	22	0.28	16	0.30	17		
		Memorial Crossing	0.43	20	47	0.19	9	0.06	3	0.17	8		
		Edgewood Manor	0.49	21	43	0.30	13	0.12	5	0.07	3		
		Madisons Crossing	0.71	30	42	0.40	17	0.17	7	0.14	6		
		Gold Rush Springs	0.93	26	28	0.50	14	0.18	5	0.25	7		
		Weighted Ratio:	0.68			0.34		0.17		0.17			
					213		313	50%		24%		25%	
		32E	Middlecreek Village	Lemmingham	0.48	10	21	0.29	6	0.00	0	0.19	4
				Linseed	0.39	7	18	0.22	4	0.06	1	0.11	2
Littlefield	0.00			0	18	0.00	0	0.00	0	0.00	0		
Meadow Tree (2800-2999)	0.17			2	12	0.08	1	0.00	0	0.08	1		
Weighted Ratio:	0.28					0.16		0.01		0.10			
			19		69	58%		5%		37%			
6B	Miramar Lake	Calico Canyon	1.17	34	29	0.48	14	0.28	8	0.41	12		
		Terra Valley	1.07	32	30	0.43	13	0.27	8	0.37	11		
		Sierra Dawn	0.79	26	33	0.18	6	0.33	11	0.27	9		
		Serrano Lake	0.82	14	17	0.35	6	0.24	4	0.24	4		
		Weighted Ratio:	0.97			0.36		0.28		0.33			
			106		109	37%		29%		34%			



Klein ISD: Ratio of Students per Single Family Home by Subdivision

Planning Unit	Subdivision	Street Name	Total Ratio	# of Students	# of Homes	PK-5th		6th-8th		9th-12th	
						Ratio	Students	Ratio	Students	Ratio	Students
12A	Normandy Forest	Deauville	0.63	50	79	0.33	26	0.08	6	0.23	18
		Florette	1.15	46	40	0.58	23	0.30	12	0.28	11
		Manon	0.76	22	29	0.24	7	0.17	5	0.34	10
		Weighted Ratio: 0.80	118	148	0.38	47%	0.16	19%	0.26	33%	
1D	Northampton Estates - The Greens of Northampton Estates	Butler Oak Ct	0.33	5	15	0.07	1	0.20	3	0.07	1
		Squirecrest Ct	0.56	5	9	0.11	1	0.11	1	0.33	3
		Taylor Way	1.00	2	2	0.50	1	0.50	1	0.00	0
		Weighted Ratio: 0.46	12	26	0.12	25%	0.19	42%	0.15	33%	
1D	Northampton Estates	0.09	1	11	0.00	0	0.09	1	0.00	0	
		Weighted Ratio: 0.09	1	11	0.00	0	0.09	1	0.00	0	
52A	Northcliffe Manor	Swinden	1.37	59	43	0.53	23	0.28	12	0.56	24
		Lufborough	1.08	42	39	0.38	15	0.38	15	0.31	12
		Stonehenge Trail	0.80	67	84	0.38	32	0.20	17	0.21	18
		Weighted Ratio: 1.01	168	166	0.42	42%	0.27	26%	0.33	32%	
15A	Northcrest Village	Colter Stone	0.45	13	29	0.21	6	0.14	4	0.10	3
		Flagg Ranch	0.66	19	29	0.38	11	0.14	4	0.14	4
		Menor Crest	0.59	20	34	0.41	14	0.06	2	0.12	4
		Catoosa	0.46	16	35	0.31	11	0.06	2	0.09	3
		Weighted Ratio: 0.54	68	127	0.33	62%	0.09	18%	0.11	21%	
5D	Northern Point	Breezy Cove Ct	0.67	8	12	0.42	5	0.08	1	0.17	2
		Flying Geese	0.77	34	44	0.32	14	0.27	12	0.18	8
		Log Cabin	0.80	47	59	0.49	29	0.14	8	0.17	10
		Seven Sisters	0.74	29	39	0.49	19	0.10	4	0.15	6
		Weighted Ratio: 0.77	118	154	0.44	57%	0.16	21%	0.17	22%	



Klein ISD: Ratio of Students per Single Family Home by Subdivision

Planning Unit	Subdivision	Street Name	Total Ratio	# of Students	# of Homes	PK-5th Ratio	PK-5th Students	6th-8th Ratio	6th-8th Students	9th-12th Ratio	9th-12th Students
63C	Northwest Park Colony	Atwood Grove	0.67	6	9	0.22	2	0.11	1	0.33	3
		Birnam Garden	0.00	0	10	0.00	0	0.00	0	0.00	0
		Redbud Villa	1.33	12	9	0.89	8	0.11	1	0.33	3
		Mimosa View	0.50	2	4	0.25	1	0.00	0	0.25	1
		Weighted Ratio:	0.63	20	32	0.34	55%	0.06	10%	0.22	35%
26 27A 28A	Oakwood Glen	Stoney River Dr	0.97	36	37	0.43	16	0.32	12	0.22	8
		Huntbrook	0.84	32	38	0.34	13	0.32	12	0.18	7
		River Mill (6800-7199)	0.55	26	47	0.26	12	0.13	6	0.17	8
		Briarfield	0.63	12	19	0.32	6	0.05	1	0.26	5
		Telegraph Creek	2.20	55	25	0.96	24	0.48	12	0.76	19
		Falling Waters	1.10	34	31	0.65	20	0.16	5	0.29	9
		Weighted Ratio:	0.99	195	197	0.46	47%	0.24	25%	0.28	29%
17	Oakwood Glen West	Creekfield	0.54	20	37	0.22	8	0.16	6	0.16	6
		Echobend	0.63	15	24	0.13	3	0.13	3	0.38	9
		Easybrook	0.76	13	17	0.35	6	0.24	4	0.18	3
			Weighted Ratio:	0.62	48	78	0.22	35%	0.17	27%	0.23
3A	Pine Trace	Plantation Pines	1.00	1	1	1.00	1	0.00	0	0.00	0
		Tallcrest Ct	0.00	0	1	0.00	0	0.00	0	0.00	0
		N East Pine Ivy	0.00	0	3	0.00	0	0.00	0	0.00	0
		W East Pine Ivy	0.00	0	29	0.00	0	0.00	0	0.00	0
		Weighted Ratio:	0.03	1	34	0.03	100%	0.00	0%	0.00	0%
4A	Pinecrest Forest	Lucky Meadow	0.39	22	57	0.23	13	0.04	2	0.12	7
		Crescent Pass	0.55	23	42	0.36	15	0.10	4	0.10	4
		Piney Bend	0.56	49	87	0.33	29	0.11	10	0.11	10
		Weighted Ratio:	0.51	94	186	0.31	61%	0.09	17%	0.11	22%



Klein ISD: Ratio of Students per Single Family Home by Subdivision

Planning Unit	Subdivision	Street Name	Total Ratio	# of Students	# of Homes	PK-5th		6th-8th		9th-12th	
						Ratio	Students	Ratio	Students	Ratio	Students
6D	Pinewood Place MHP	Lodgepole	1.40	21	15	1.00	15	0.07	1	0.33	5
		White Pine	0.83	19	23	0.52	12	0.09	2	0.22	5
		Torrey Pine	1.00	25	25	0.48	12	0.16	4	0.36	9
		Weighted Ratio: 1.03	65	63	0.62	60%	0.11	11%	0.30	29%	
2	Princeton Place	Rosevale Ct	0.00	0	10	0.00	0	0.00	0	0.00	0
		Cedarwalk	0.63	20	32	0.19	6	0.31	10	0.13	4
		Sandusky	0.73	33	45	0.38	17	0.24	11	0.11	5
		Lazy Tee	0.71	10	14	0.29	4	0.21	3	0.21	3
Weighted Ratio: 0.62	63	101	0.27	43%	0.24	38%	0.12	19%			
13A	Rhodes Landing	Amorgas Isle	0.69	24	35	0.29	10	0.20	7	0.20	7
		Asipallia	1.05	39	37	0.62	23	0.19	7	0.24	9
		Kasos Isle	0.61	17	28	0.32	9	0.07	2	0.21	6
		Weighted Ratio: 0.80	80	100	0.42	53%	0.16	20%	0.22	28%	
2	Saddlebrook Ranch	Sunset Pond	0.38	9	24	0.17	4	0.13	3	0.08	2
		Saddlebrook Ranch	0.71	5	7	0.29	2	0.14	1	0.29	2
		Sweet Pasture	1.00	9	9	0.67	6	0.11	1	0.22	2
		Sunny Gallop	0.43	15	35	0.20	7	0.09	3	0.14	5
Weighted Ratio: 0.51	38	75	0.25	50%	0.11	21%	0.15	29%			
15F	Senterra Lakes	Brookway Willow	1.00	29	29	0.59	17	0.07	2	0.34	10
		Brookway Place	0.00	0	9	0.00	0	0.00	0	0.00	0
		Brookway Oak	0.38	3	8	0.25	2	0.13	1	0.00	0
		Brookway Wind	0.17	1	6	0.17	1	0.00	0	0.00	0
Weighted Ratio: 0.63	33	52	0.38	61%	0.06	9%	0.19	30%			



Klein ISD: Ratio of Students per Single Family Home by Subdivision

Planning Unit	Subdivision	Street Name	Total Ratio	# of Students	# of Homes	PK-5th		6th-8th		9th-12th	
						Ratio	Students	Ratio	Students	Ratio	Students
29	Spring Creek Court	Sedona Springs	0.60	6	10	0.40	4	0.00	0	0.20	2
		Woodbury Springs	0.83	5	6	0.00	0	0.33	2	0.50	3
		Amelia Springs	0.96	22	23	0.57	13	0.17	4	0.22	5
		Coronado Springs	0.30	6	20	0.00	0	0.15	3	0.15	3
		Weighted Ratio:	0.66	39	59	0.29	44%	0.15	23%	0.22	33%
32D	Spring Landing	Spring Flower	0.97	38	39	0.46	18	0.26	10	0.26	10
		Spring Bluff	0.42	13	31	0.10	3	0.13	4	0.19	6
		Spring Mission	1.17	28	24	0.67	16	0.25	6	0.25	6
		Weighted Ratio:	0.84	79	94	0.39	47%	0.21	25%	0.23	28%
9C	Spring Oaks MHP	Pine	0.05	2	44	0.00	0	0.02	1	0.02	1
		Live Oak Ln	0.03	1	40	0.03	1	0.00	0	0.00	0
		Pin Oak Ln	0.11	2	18	0.11	2	0.00	0	0.00	0
		Weighted Ratio:	0.05	5	102	0.03	60%	0.01	20%	0.01	20%
6C	Spring Terrace	Springfield Garden	0.81	26	32	0.38	12	0.16	5	0.28	9
		Saragosa Pond	0.32	9	28	0.14	4	0.00	0	0.18	5
		Castle Terrace Ct	1.67	30	18	0.89	16	0.22	4	0.56	10
		Amesbury Meadow	1.15	46	40	0.55	22	0.28	11	0.33	13
		Weighted Ratio:	0.94	111	118	0.46	49%	0.17	18%	0.31	33%
6B	Spring Village Estates	Spring Village Dr	0.44	4	9	0.33	3	0.11	1	0.00	0
		Weighted Ratio:	0.44	4	9	0.33	75%	0.11	25%	0.00	0%
15D	Springbrook	Fairbrook Park	0.71	25	35	0.37	13	0.14	5	0.20	7
		Shadow River	0.92	22	24	0.58	14	0.13	3	0.21	5
		Winter Mountain	0.69	22	32	0.38	12	0.13	4	0.19	6
		Weighted Ratio:	0.76	69	91	0.43	57%	0.13	17%	0.20	26%
7A	Sterling Ridge at Northampton	Star Ledge	1.00	15	15	0.40	6	0.27	4	0.33	5
		Weighted Ratio:	1.00	15	15	0.40	4	0.27	4	0.33	5



Klein ISD: Ratio of Students per Single Family Home by Subdivision

Planning Unit	Subdivision	Street Name	Total Ratio	# of Students	# of Homes	PK-5th		6th-8th		9th-12th	
						Ratio	Students	Ratio	Students	Ratio	Students
				15	15		40%		27%		33%
4C	Stonepine	Stonepine Creek	0.44	8	18	0.28	5	0.06	1	0.11	2
		Stonepine Meadow Ct	0.53	8	15	0.27	4	0.27	4	0.00	0
		Standing Pine	0.43	13	30	0.23	7	0.07	2	0.13	4
		Weighted Ratio: 0.46				0.25		0.11		0.10	
				29	63		55%		24%		21%
5A	Sugarberry Place MHP	Mulberry Park	1.22	28	23	0.43	10	0.43	10	0.35	8
		Cedar Berry	0.00	0	8	0.00	0	0.00	0	0.00	0
		Datewood	0.43	3	7	0.43	3	0.00	0	0.00	0
		Weighted Ratio: 0.82				0.34		0.26		0.21	
				31	38		42%		32%		26%
39	Terranova West	Surreywest	0.64	21	33	0.24	8	0.06	2	0.33	11
		Woodlode	0.53	21	40	0.23	9	0.08	3	0.23	9
		Windtree	0.60	6	10	0.20	2	0.10	1	0.30	3
		Weighted Ratio: 0.58				0.23		0.07		0.28	
				48	83		40%		13%		48%
39	Terravista	Braxton Grove	0.67	4	6	0.33	2	0.17	1	0.17	1
		Oakdale Meadows	0.75	3	4	0.25	1	0.50	2	0.00	0
		Layton Meadows	1.40	7	5	0.60	3	0.80	4	0.00	0
		Norwood Oaks	0.45	5	11	0.18	2	0.18	2	0.09	1
				19	26		42%		47%		11%
39	Terravista - Terravista Estates	Stockton Springs	0.33	2	6	0.17	1	0.00	0	0.17	1
		Silverthorne Glen	0.20	1	5	0.00	0	0.00	0	0.20	1
		Graymont Hills	0.00	0	1	0.00	0	0.00	0	0.00	0
		Harpost Manor	0.00	0	1	0.00	0	0.00	0	0.00	0
				3	13		33%		0%		67%
				3	13		33%		0%		67%
				3	13		33%		0%		67%



Klein ISD: Ratio of Students per Single Family Home by Subdivision

Planning Unit	Subdivision	Street Name	Total		# of Homes	PK-5th		6th-8th		9th-12th	
			Ratio	# of Students		Ratio	Students	Ratio	Students	Ratio	Students
13B	The Park at Meadowhill Run	Grassy Hill	0.55	22	40	0.33	13	0.15	6	0.08	3
		Mossy Field	0.63	25	40	0.35	14	0.08	3	0.20	8
		Mossy Springs	0.25	1	4	0.00	0	0.00	0	0.25	1
		Mossy Place	0.19	8	42	0.07	3	0.02	1	0.10	4
		Weighted Ratio:	0.44	56	126	0.24	54%	0.08	18%	0.13	29%
31C	Thicket at Cypresswood	Mountain Shade	0.43	9	21	0.19	4	0.10	2	0.14	3
		Cypress Mountain	0.88	15	17	0.06	1	0.29	5	0.53	9
		Cypress Chateau	0.58	7	12	0.17	2	0.33	4	0.08	1
		Weighted Ratio:	0.62	31	50	0.14	23%	0.22	35%	0.09	42%
4A	Three Lakes	White River	0.34	10	29	0.14	4	0.14	4	0.07	2
		Taylor's Crossing	0.63	12	19	0.37	7	0.11	2	0.16	3
		Twin Buttes	0.67	18	27	0.52	14	0.07	2	0.07	2
		Weighted Ratio:	0.53	40	75	0.33	63%	0.11	20%	0.09	18%
52B	Timber Meadow	Rosslare	1.18	20	17	0.53	9	0.41	7	0.24	4
		Aarons Way	1.30	43	33	0.42	14	0.30	10	0.58	19
		Heritagestone	1.26	43	34	0.50	17	0.35	12	0.41	14
		Gatton Park	1.73	107	62	0.76	47	0.40	25	0.56	35
		Weighted Ratio:	1.46	213	146	0.60	41%	0.37	25%	0.49	34%
1A	Timbercrest Village MHP	Pinecrest	1.17	34	29	0.52	15	0.28	8	0.38	11
		Deer Trail	0.83	25	30	0.30	9	0.13	4	0.40	12
		Black Forest	0.73	30	41	0.41	17	0.15	6	0.17	7
		Weighted Ratio:	0.89	89	100	0.41	46%	0.18	20%	0.30	34%
1A	Timberwilde MHP	Timberwilde	0.10	2	20	0.05	1	0.05	1	0.00	0
		Willowick	0.91	21	23	0.57	13	0.22	5	0.13	3
		Teal Trail	0.73	16	22	0.45	10	0.09	2	0.18	4
		Weighted Ratio:	0.60	39	65	0.37	62%	0.12	21%	0.11	18%



Klein ISD: Ratio of Students per Single Family Home by Subdivision

Planning Unit	Subdivision	Street Name	Total		# of Students	# of Homes	PK-5th		6th-8th		9th-12th	
			Ratio	Ratio			Ratio	Students	Ratio	Students	Ratio	Students
30A	Twin Falls	Hamilton Falls	0.70		14	20	0.20	4	0.20	4	0.30	6
		Emerald Pool	0.31		5	16	0.19	3	0.00	0	0.13	2
		Raven Cliffs	0.41		7	17	0.18	3	0.12	2	0.12	2
		Windy Run	0.26		5	19	0.00	0	0.05	1	0.21	4
		Weighted Ratio: 0.43		31	72	0.14	4	0.10	23%	0.19	45%	
39	Villa Nova	Viamonte	0.00		0	1	0.00	0	0.00	0	0.00	0
		Weighted Ratio: 0.00		0	1	0.00	0%	0.00	0%	0.00	0%	
15E	Villages of Bridgestone	Beaubridge	0.42		8	19	0.21	4	0.11	2	0.11	2
		Villages of Broadstone Blvd	0.31		16	51	0.10	5	0.10	5	0.12	6
		Bridge Crossing	0.00		0	8	0.00	0	0.00	0	0.00	0
		Creekbridge Ct	1.00		8	8	0.50	4	0.00	0	0.50	4
		Weighted Ratio: 0.37		32	86	0.15	41%	0.08	22%	0.14	38%	
15F	Villas of Senterra Lakes	Senterra Lakes	0.55		6	11	0.18	2	0.00	0	0.36	4
		Valhalla	0.70		7	10	0.30	3	0.20	2	0.20	2
		Long Ship	1.20		12	10	0.40	4	0.30	3	0.50	5
		Valkyrie	0.34		12	35	0.09	3	0.20	7	0.06	2
		Weighted Ratio: 0.56		37	66	0.18	32%	0.18	32%	0.20	35%	
34B	Villas at Candlelight Park	Mirror Ct	1.25		10	8	0.63	5	0.25	2	0.38	3
		Mirror Lake Dr	1.00		6	6	1.00	6	0.00	0	0.00	0
		Weighted Ratio: 1.14		16	14	0.79	69%	0.14	13%	0.21	19%	
20B	Vintage Royale	Mustang Mountain Ct	0.00		0	6	0.00	0	0.00	0	0.00	0
		Sunlight Oak	0.00		0	11	0.00	0	0.00	0	0.00	0
		Durango Point	1.00		2	2	0.50	1	0.50	1	0.00	0
		Powder Springs	0.00		0	7	0.00	0	0.00	0	0.00	0
		Weighted Ratio: 0.08		2	26	0.04	50%	0.04	50%	0.00	0%	0%



Klein ISD: Ratio of Students per Single Family Home by Subdivision

Planning Unit	Subdivision	Street Name	Total		# of		PK-5th		6th-8th		9th-12th	
			Ratio	Ratio	Students	Homes	Ratio	Students	Ratio	Students	Ratio	Students
6B	Willow Dell	Willow Downs	0.87	52	60	0.38	23	0.22	13	0.27	16	
		Willow Shade	0.88	30	34	0.41	14	0.21	7	0.26	9	
		Holly Branch (21900-22299)	0.86	38	44	0.48	21	0.18	8	0.20	9	
		Weighted Ratio: 0.87				0.42		0.20		0.25		
			120	138		48%		23%		28%		
6A	Willow Forest	Amurwood	0.83	30	36	0.39	14	0.28	10	0.17	6	
		Spring Willow	1.04	24	23	0.39	9	0.30	7	0.35	8	
		Willow Forest	0.56	9	16	0.38	6	0.06	1	0.13	2	
		Weighted Ratio: 0.84			0.39		0.24		0.21			
			63	75		46%		29%		25%		
6C	Willow Trace	Nagy Hill	0.54	7	13	0.23	3	0.23	3	0.08	1	
		Katie Mill	0.89	16	18	0.44	8	0.22	4	0.22	4	
		Hardy Elm	0.57	25	44	0.27	12	0.14	6	0.16	7	
		Loetsch Ridge	0.57	16	28	0.39	11	0.04	1	0.14	4	
		Weighted Ratio: 0.62			0.33		0.14		0.16			
			64	103		53%		22%		25%		
17	Willowick Forest	Pleasantwood	0.43	6	14	0.00	0	0.14	2	0.29	4	
		Bridenwood	0.29	2	7	0.14	1	0.00	0	0.14	1	
		Hampton Park	0.78	7	9	0.33	3	0.22	2	0.22	2	
		Saint Emilion Ct	0.63	10	16	0.06	1	0.19	3	0.38	6	
					0.11		0.15		0.28			
			25	46		20%		28%		52%		
61 62A	Willowood	Crisp Wood	1.55	68	44	0.89	39	0.32	14	0.34	15	
		Winkle Wood	1.48	80	54	0.78	42	0.35	19	0.35	19	
		Smiling Wood (7500-7699)	0.85	52	61	0.39	24	0.23	14	0.23	14	
		Wind Flower	1.08	26	24	0.42	10	0.29	7	0.38	9	
		Shady Tree	1.56	42	27	0.81	22	0.44	12	0.30	8	
		Desert Flower	1.90	57	30	1.17	35	0.40	12	0.33	10	
					0.72		0.33		0.31			
			325	240		53%		24%		23%		



Klein ISD: Ratio of Students per Single Family Home by Subdivision

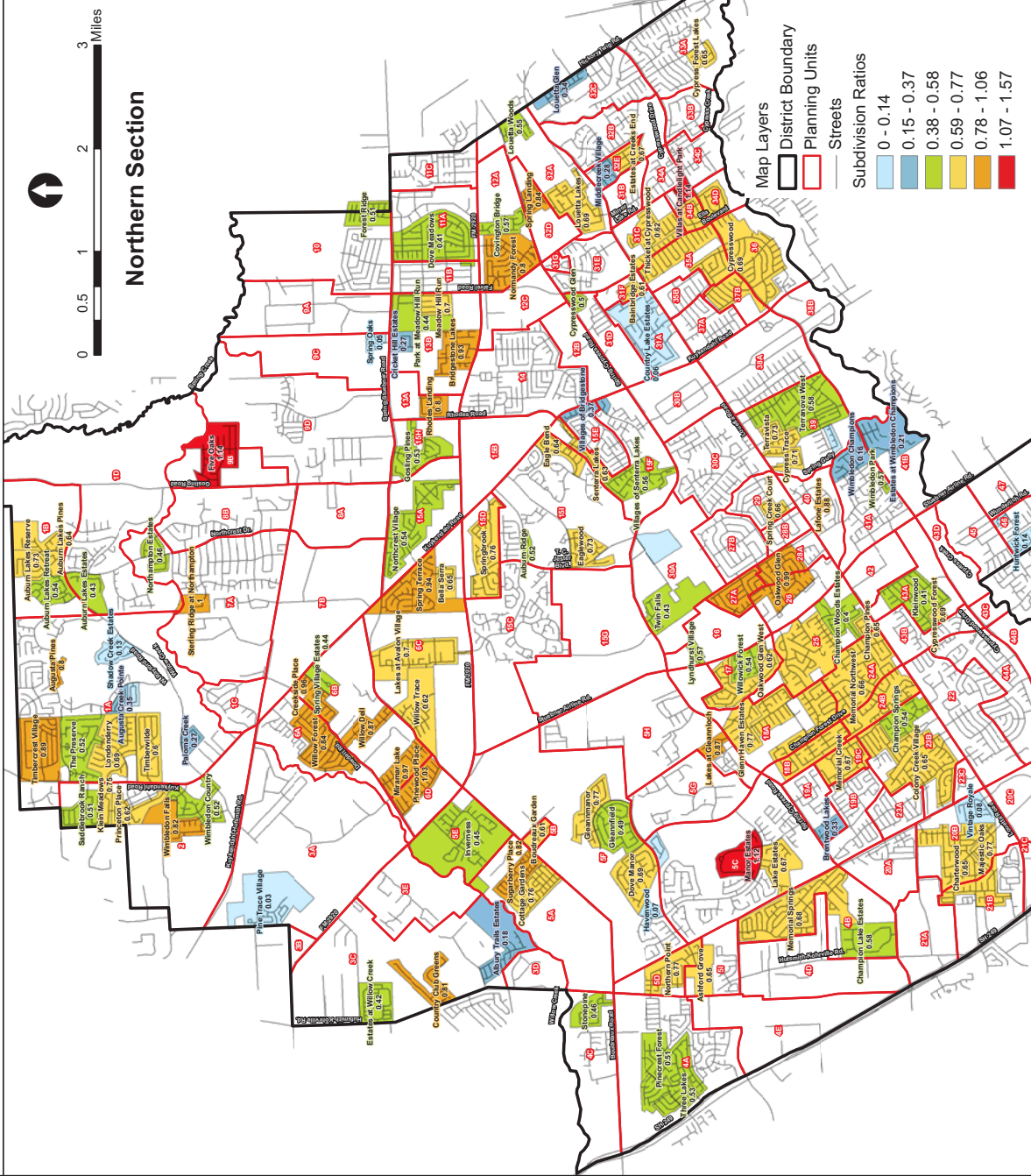
Planning Unit	Subdivision	Street Name	Total Ratio	# of Students	# of Homes	PK-5th		6th-8th		9th-12th	
						Ratio	Students	Ratio	Students	Ratio	Students
41A	Wimbledon Champions	Connors Ace	0.00	0	10	0.00	0	0.00	0	0.00	0
		Cochet Spring Dr	0.00	0	26	0.00	0	0.00	0	0.00	0
		Lacoste Love Ct	0.00	0	18	0.00	0	0.00	0	0.00	0
		Laver Love	0.79	11	14	0.14	2	0.21	3	0.43	6
		Weighted Ratio: 0.16				0.03		0.04		0.09	
				11	68		18%		27%		
2	Wimbledon Country	Rain Creek	0.63	33	52	0.15	8	0.13	7	0.35	18
		Sedgemoor	0.09	2	22	0.05	1	0.00	0	0.05	1
		W Rayford	0.42	5	12	0.00	0	0.08	1	0.33	4
		Doverwick	0.79	15	19	0.37	7	0.21	4	0.21	4
		Weighted Ratio: 0.52				0.15		0.11		0.26	
				55	105		29%		22%		
2	Wimbledon Falls	Running Eagle Falls	0.30	3	10	0.10	1	0.10	1	0.10	1
		Redrock Falls	0.57	8	14	0.36	5	0.14	2	0.07	1
		Split Rock Falls	1.23	16	13	0.69	9	0.15	2	0.38	5
		Rocky Brook Falls	0.93	27	29	0.45	13	0.14	4	0.34	10
		Weighted Ratio: 0.82				0.42		0.14		0.26	
				54	66		52%		17%		
41A	Wimbledon Park	Seaton Valley	0.57	16	28	0.18	5	0.14	4	0.25	7
		Weighted Ratio: 0.57				0.18		0.14		0.25	
15I	Windrose - Auburn Ridge	Windrose Hollow	0.52	13	25	0.12	3	0.20	5	0.20	5
		Weighted Ratio: 0.52				0.12		0.20		0.20	
						13	25		31%		25%
15I	Windrose - Eagle Bend	Capella Park	0.50	29	58	0.26	15	0.14	8	0.10	6
		Fallentimber	1.00	14	14	0.57	8	0.21	3	0.21	3
		Pinehaven	0.86	12	14	0.29	4	0.14	2	0.43	6
		Weighted Ratio: 0.64				0.31		0.15		0.17	
				55	86		49%		24%		
										27%	



Klein ISD:
Ratio of Students per Single Family Home by Subdivision

Planning Unit	Subdivision	Street Name	Total Ratio	# of		PK-5th		6th-8th		9th-12th	
				Students	Homes	Ratio	Students	Ratio	Students	Ratio	Students
15I	Windrose - Eaglewood	Briarstone Ln	0.75	12	16	0.00	0	0.25	4	0.50	8
		Evergreen Springs	0.84	32	38	0.32	12	0.24	9	0.29	11
		Stormy Pine	0.52	11	21	0.19	4	0.24	5	0.10	2
		Weighted Ratio: 0.73	55	75	0.21	29%	0.24	33%	0.28	38%	
30A	Windrose - The Chancel	St Placindia	0.00	0	2	0.00	0	0.00	0	0.00	0
		St Bernadette	0.00	0	1	0.00	0	0.00	0	0.00	0
		Weighted Ratio: 0.00	0	3	0.00	0%	0.00	0%	0.00	0%	
TOTAL:				7,584	11,606	0.31	3,560	1,718	2,306		
September 2010, TOTAL WEIGHTED RATIO: 0.65						0.15		0.20			
PERCENT BY GRADE GROUP (WEIGHTED):						47%		23%		30%	

Ratios of Students per Occupied Unit By Subdivision



Klein I.S.D.: Ratio of Students Per Household By Apartment

PU	Apartment Complex	Street Name	Total Students	Total Units	Occupied Units	% Occupied	Students per Occ. Unit	EE-5th		6th-8th		9th-12th	
								Students	Ratio	Students	Ratio	Students	Ratio
38A	Applewood Village	4500 Cypresswood	40	140	133	95%	0.30	21 53%	0.16	11 28%	0.08	8 20%	0.06
2	Augusta Meadows <i>*Opened September 2009</i>	24215 Kuykendahl Rd	42	264	195	74%	0.21	19 45%	0.10	6 14%	0.03	17 40%	0.09
59	Briar Park	10401 Old Bammel-N Houston	58	80	70	87%	0.83	37 64%	0.53	11 19%	0.16	10 17%	0.14
46	Bridgewater Landing Condos <i>*Primarily Adult Living, but some children</i>	14911 Wunderlich	10	182	180	99%	0.06	8 80%	0.04	2 20%	0.01	0 0%	0.00
47	Brookfield	14230 Wunderlich	54	250	240	96%	0.23	27 50%	0.11	7 13%	0.03	20 37%	0.08
64	Casa Nube en Montgomery <i>*Formerly Woodglen Village</i>	11111 W Montgomery	191	264	240	91%	0.80	119 62%	0.50	24 13%	0.10	48 25%	0.20
62A	Cedar Pointe <i>*Not Included in Total</i>	7610 Fallbrook	0										
62A	Champion Forest <i>*Not Included in Total</i>	7330 Silent Wood Ln # 101	0										
47	Champion Oaks	14150 Wunderlich Dr	43	252	232	92%	0.19	27 63%	0.12	9 21%	0.04	7 16%	0.03
50	Champions Village	12811 Greenwood Forest	75	278	247	89%	0.30	34 45%	0.14	12 16%	0.05	29 39%	0.12
65	Chesapeake Village <i>*Not Included in Total</i>	8430 Antoine	0										
47	Copper Creek	14222 Wunderlich	62	300	210	70%	0.30	41 66%	0.20	14 23%	0.07	7 11%	0.03
26	The Cottages of Cypresswood <i>*Formerly Kressington Place</i>	7203 Oakwood Glen	57	136	132	97%	0.43	30 53%	0.23	15 26%	0.11	12 21%	0.09

Klein I.S.D.: Ratio of Students Per Household By Apartment

PU	Apartment Complex	Street Name	Total Students	Total Units	Occupied Units	% Occupied	Students per Occ. Unit	EE-5th		6th-8th		9th-12th	
								Students	Ratio	Students	Ratio	Students	Ratio
38B	Cypresswood	4607 Cypresswood	24	144	131	91%	0.18	10 42%	0.08	8 33%	0.06	6 25%	0.05
38B	Falcon Ridge	4603 Cypresswood	44	234	206	88%	0.21	22 50%	0.11	10 23%	0.05	12 27%	0.06
51	Greenwood Forest	12820 Greenwood Forest	61	316	300	95%	0.20	29 48%	0.10	9 15%	0.03	23 38%	0.08
67A	Inwood Meadows	9003-9025 Antoine & 8923-8931	21	40	36	90%	0.58	5 24%	0.14	11 52%	0.31	5 24%	0.14
51	The Lexington at Champions	5007 FM 1960 West	14	89	79	89%	0.18	5 36%	0.06	6 43%	0.08	3 21%	0.04
43A	The Lodge at Cypresswood	8100 Cypresswood	58	366	344	94%	0.17	29 50%	0.08	13 22%	0.04	16 28%	0.05
42	Lyons Court <i>*Not Included in Total</i>	16303 Lyons School Rd	0										
42	Mill Creek	16339 Stuebner-Airline	107	174	148	85%	0.72	49 46%	0.33	21 20%	0.14	37 35%	0.25
37A	Oak Falls	4545 Louetta	79	144	138	96%	0.57	30 38%	0.22	18 23%	0.13	31 39%	0.22
41A	Oaks of Wimbledon	16414 Stuebner-Airline	72	184	127	69%	0.57	32 44%	0.25	14 19%	0.11	26 36%	0.20
26	Oakwood Glen <i>*Not Included in Total. Not willing to provide data.</i>	7118 Oakwood Glen Blvd.	0	24	0								
63A	The Park at Willowbrook	7100 Smiling Wood Lane	115	228	214	94%	0.54	77 67%	0.36	19 17%	0.09	19 17%	0.09
63C	Primrose at Heritage Park <i>*Senior Living. Not included in total.</i>	10655 N Old Bammel	0		0								
48	Providence at Champions <i>*Some renovations still underway</i>	5100 FM 1960	47	288	228	79%	0.21	20 43%	0.09	15 32%	0.07	12 26%	0.05
38B	The Ravinia	2400 Spring Rain	56	232	218	94%	0.26	28 50%	0.13	16 29%	0.07	12 21%	0.06

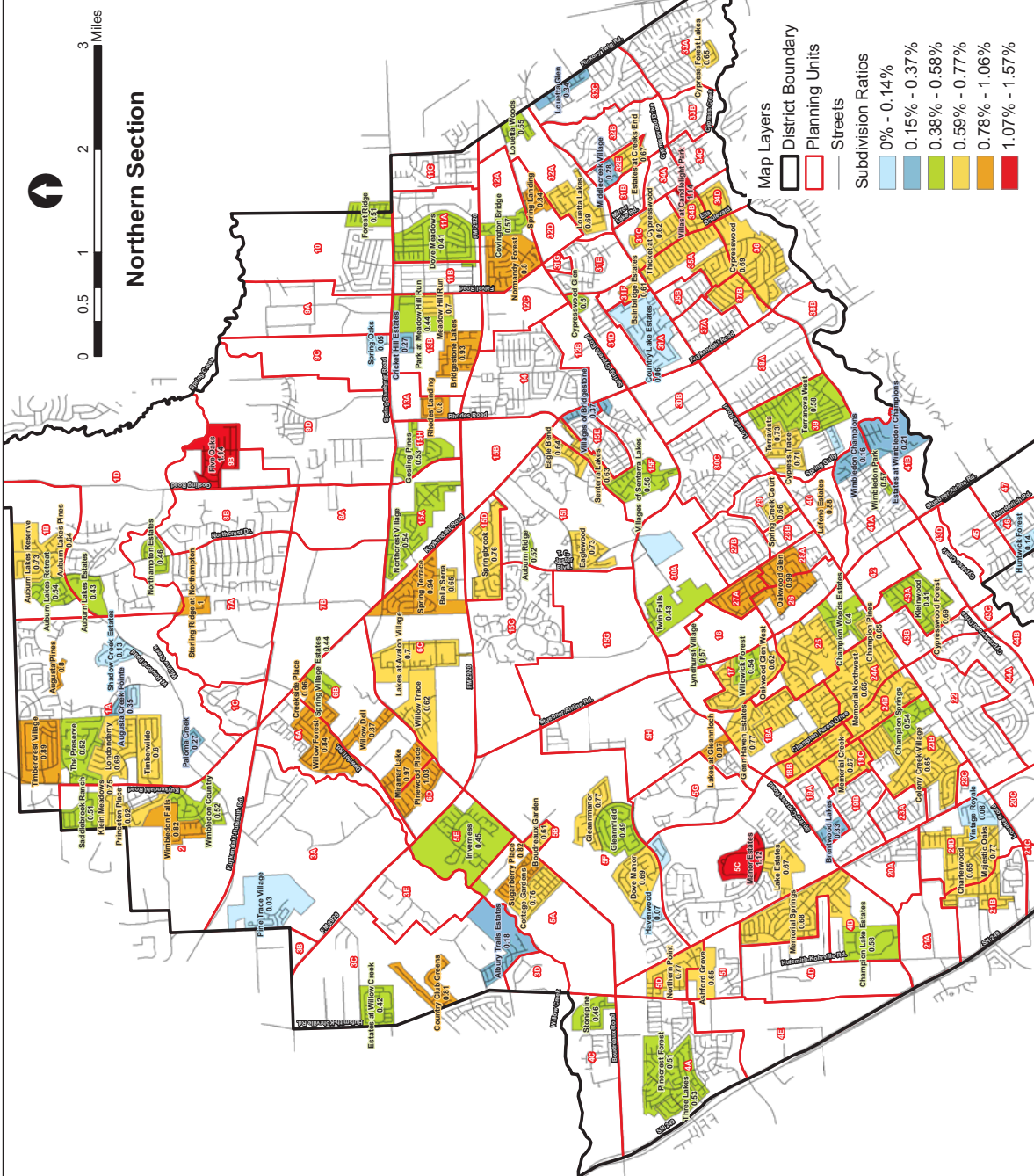
Klein I.S.D.: Ratio of Students Per Household By Apartment

PU	Apartment Complex	Street Name	Total Students	Total Units	Occupied Units	% Occupied	Students per Occ. Unit	EE-5th		6th-8th		9th-12th	
								Students	Ratio	Students	Ratio	Students	Ratio
68	Roslyn Heights	7015 Woodsman Trail	67	60	60	100%	1.12	41 61%	0.68	14 21%	0.23	12 18%	0.20
20C	San Cierra	15500 Cutten Rd	44	362	272	75%	0.16	20 45%	0.07	14 32%	0.05	10 23%	0.04
49	Sendera Champion Forest	12801 Champion Forest Dr	68	198	182	92%	0.37	38 56%	0.21	7 10%	0.04	23 34%	0.13
59	Seton Chase	7703 Seton Lake	118	232	209	90%	0.57	70 59%	0.34	24 20%	0.11	24 20%	0.11
56A	Smoketree <i>*Formerly Traces Loft Townhomes</i>	5110 Azalea Trace	58	260	216	83%	0.27	22 38%	0.10	18 31%	0.08	18 31%	0.08
26	Spring Oaks	7103 Oakwood Glen & 7133	40	184	85	46%	0.47	20 50%	0.24	7 18%	0.08	13 33%	0.15
4D	Stoneleigh Cypress Pointe	10810 Spring Cypress Rd	50	228	214	94%	0.23	27 54%	0.13	10 20%	0.05	13 26%	0.06
30A	Stoneleigh on Spring Cypress	7215 Spring Cypress Rd.	72	216	210	97%	0.34	36 50%	0.17	20 28%	0.10	16 22%	0.08
30A	Stoneleigh on The Lake	7303 Spring Cypress Rd.	40	228	217	95%	0.18	22 55%	0.10	9 23%	0.04	9 23%	0.04
38A	Terranova at Cypresswood <i>*Not included in total - retirement community</i>	5600 Cypresswood Dr.											
67A	Timbers of Inwood Forest	5850 W Gulf Bank Rd & 5880	109	376	331	88%	0.33	63 58%	0.19	13 12%	0.04	33 30%	0.10
21B	Tivoli	10110 Charterwood & 10111	25	156	153	98%	0.16	17 68%	0.11	3 12%	0.02	5 20%	0.03
46	Trophy Club Condos	14515 Wunderlich & 14555	29	329	276	84%	0.10	17 59%	0.06	4 14%	0.01	8 28%	0.03

Klein I.S.D.: Ratio of Students Per Household By Apartment

PU	Apartment Complex	Street Name	Total Students	Total Units	Occupied Units	% Occupied	Students per Occ. Unit	EE-5th Students	EE-5th Ratio	6th-8th Students	6th-8th Ratio	9th-12th Students	9th-12th Ratio
5G	Village of Cleannloch Farms	9505 Northpointe Blvd.											
	*Not included in total - retirement community												
38A	Villages at Louetta	5015 Louetta Rd.	148	300	273	91%	0.54	71	0.26	29	0.11	48	0.18
								48%		20%		32%	
20B	Vintage Park	15727 Cutten	56	324	311	96%	0.18	27	0.09	14	0.05	15	0.05
								48%		25%		27%	
46	Waterman Crossing	14777 Wunderlich	7	300	201	67%	0.03	1	0.00	5	0.02	1	0.00
								14%		71%		14%	
51	Willow Bend	13949 Bammel-N Houston	222	333	313	94%	0.71	123	0.39	41	0.13	58	0.19
								55%		18%		26%	
63A	Willowbrook Crossing	7150 Smiling Wood	96	208	196	94%	0.49	67	0.34	11	0.06	18	0.09
								70%		11%		19%	
41A	Wimbledon	16222 Stuebner-Airline	109	161	143	89%	0.76	50	0.35	27	0.19	32	0.22
								46%		25%		29%	
41A	Wimbledon Pines Condos	16120 Stuebner-Airline	10	51	46	90%	0.22	4	0.09	0	0.00	6	0.13
								40%		0%		60%	
TOTAL RATIO: 2,688 9,091 7,955 88% 0.34								1,435	0.18	541	0.07	722	0.09
WEIGHTED PERCENT BY GRADE GROUP:								53.4%		20.1%		26.9%	

Ratios of Students per Occupied Unit By Subdivision



Klein I.S.D.: Trends in Ratios of Students per Household



Planning Unit	Subdivision	July 2003 Ratio	April 2007 Ratio	October 2009 Ratio	Sept 2010 Ratio
3C	Albury Trails Estates			0.15	0.18
58	Ash Creek			1.27	1.16
5D	Ashford Place		0.57	0.70	0.65
1D	Auburn Lakes - Auburn Lakes Estates		0.17	0.48	0.43
1D	Auburn Lakes - Auburn Lakes Pines			0.62	0.64
1D	Auburn Lakes - Auburn Lakes Reserve			0.76	0.73
1D	Auburn Lakes - Auburn Lakes Retreat				0.54
1A	Augusta Pines - The Courts at Auburn Lakes		0.13	0.06	0.10
1D	Auburn Lakes - The Village		0.51	0.71	0.53
1A	Augusta Pines - Augusta Creek Estate			0.11	
1A	Augusta Pines - Augusta Creek Gardens			0.00	
1A	Augusta Pines - Augusta Creek Pointe			0.50	0.35
1A	Augusta Pines - Augusta Pines			1.10	0.80
1A	Augusta Pines - Paloma Creek			0.50	0.27
1A	Augusta Pines - Shadow Creek Estates			1.08	0.13
1A	Augusta Pines - Shadow Creek Estates - The Villas				0.17
1A	Augusta Pines - The Estates				1.00
1A	Augusta Pines - The Forest		0.20		
1A	Augusta Pines - The Gardens				0.00
1A	Augusta Pines - The Greens		0.08		0.08
1A	Augusta Pines - The Legends at Augusta Pines		1.00	1.00	0.75
1A	Augusta Pines - The Preserve - Oak Hill Estates		0.58	0.40	0.80
1A	Augusta Pines - The Preserve - Oak Trace		0.61	0.58	0.54
1A	Augusta Pines - The Preserve - Oakmont Village		0.13	0.23	0.22
1A	Augusta Pines - The Villas			0.00	0.00
1A	Augusta Pines - Tuscano		0.20		
31F	Bainbridge Estates			0.92	0.61
6C	Bella Sera		0.46	0.66	0.65
32C	Bending Bough	0.74			
47	Big Cypress Hill Estates				0.44
60	Blue Creek			1.14	1.15
14	Bridgestone	0.69			
5B	Boudreaux Gardens MHP		0.73	0.47	0.61
19A	Brentwood Lakes			0.43	0.33
13B	Bridgestone Lakes			0.95	0.93
22	Champions Cove	0.69			
4B	Champions Lakes Estates		0.22	0.47	0.58
23	Champion Pines			0.42	0.65
23B	Champion Springs			0.71	0.54
25	Champion Woods Estates			0.43	0.40
55B	Champion Woods Estates - The Reserve			0.65	0.47
25	Champion Woods Estates - The Retreat			0.00	0.00
55B	Champions Crossing			0.35	0.49
23C	Champions Trail			0.35	0.33
20B	Charterwood			0.78	0.65
65	Cherie Cove			0.85	1.06
20B	Colony Creek Village	0.87		0.63	0.65
57B	Copper Falls			1.19	1.26
5A	Cottage Gardens	0.49	0.33	0.62	0.76
3C	Country Club Greens		0.43	0.74	0.81
31A	Country Lake Estates			0.68	0.06
1A	Coventry		0.56		
12A	Covington Bridge	0.49		0.78	0.57
1C	Creek Wood Acres		0.50		
6B	Creeside Place		0.53	0.89	0.96
13B	Cricket Hill Estates MHP		0.27	0.21	0.27
55A	Cutten Green	0.66			
33A	Cypress Forest Lakes			0.36	0.65
39	Cypress Trace		0.47	0.56	0.71
35A	Cypresswood	0.83		0.77	0.69
36	Cypresswood	0.49			0.69
43A	Cypresswood Forest			0.62	0.69
31D	Cypresswood Glen - The Park at Cypresswood Glen			0.59	0.50
11A	Dove Meadows	0.66		0.53	0.41
47	Edinburgh Estates	0.45			
33A	Enchanted Oaks	0.72			
32E	Estates at Creeks End			0.64	0.67
3C	Estates at Willow Creek			0.43	0.42

"Light Green" subdivisions indicate continued increases in the no. of students per home. "Yellow" subdivisions show areas where ratios declined this year. (Population and Survey Analysts)

Klein I.S.D.: Trends in Ratios of Students per Household



Planning Unit	Subdivision	July 2003 Ratio	April 2007 Ratio	October 2009 Ratio	Sept 2010 Ratio
3C	Albury Trails Estates			0.15	0.18
41B	Estates at Wimbleton Champions			0.68	0.21
43B	Falls at Champions Forest			0.27	
9B	Five Oaks MHP	0.87	0.78	1.20	1.14
10	Forest North	0.95			
10	Forest Ridge				0.51
64	Garden City Park	0.47		0.39	0.47
18A	Gleann Haven Estates		0.97	0.69	0.77
5C	Gleann Meadows		0.00		
5C	Gleannloch Farms (Northern)	0.41			
5C	Gleannloch Farms (Southern)	0.63			
5C	Gleannloch Farms - Arbors			0.02	0.00
5F	Gleannloch Farms - Dove Manor		0.45	0.61	0.69
5F	Gleannloch Farms - Gleannfield		0.44	0.53	0.49
5F	Gleannloch Farms - Gleannmanor		0.30	0.64	0.77
5F	Gleannloch Farms - Havenwood			0.09	0.07
5C	Gleannloch Farms - Lake Estates			1.03	0.67
5C	Gleannloch Farms - Manor Estates			1.12	1.12
5C	Gleannloch Farms - The Bluff		0.62		
5C	Gleannloch Farms - The Estates		0.92		
5C	Gleannloch Farms - The Hillcrest		0.97		
5C	Gleannloch Farms - The Paddock Estates		1.04		
5H	Gleannloch Farms - The Retreat at Gleannloch Farms			0.11	0.06
19B	Glenloch	0.77			
15H	Gosling Pines		0.65	0.61	
49, 53, 54A, 54B	Greenwood Forest	0.64		0.33	0.37
55C	Hamill Ranch				1.57
7A	Hampton Oaks		0.69		
46 & 48	Huntwick Forest			0.20	0.14
9B	Hydies Crossing MHP		0.67		
5E	Inverness		0.56	0.74	0.45
65, 66, 67A	Inwood North	0.63		0.72	0.65
68	Inwood West	0.78			
2	Klein Meadows		0.12	0.82	0.75
56A & 57A	Kleinbrook			0.80	0.87
43A	Kleinwood	0.64		0.34	0.41
40	Lafone Estates			1.06	0.88
6C	Lakes at Avalon Village			0.63	0.70
5H	Lakes at Gleannloch Farms			0.76	0.87
33B	Lakes of Cypress Forest			0.52	
1A	Londonderry	1.04	0.82	0.85	0.69
32C	Louetta Glen			0.41	0.34
32A	Louetta Lakes			0.77	0.69
32A	Louetta Woods			0.47	0.55
16	Lyndhurst Village		0.33	0.44	0.57
20B	Majestic Oak			0.73	0.77
46	Marble Gate Court			0.00	0.00
13B	Meadow Hill Run		0.49	0.66	0.70
19B	Memorial Chase	0.74			
19C	Memorial Creek		1.06	0.83	0.67
18A, 18B, 24A, 24B, 25	Memorial Northwest	0.76		0.49	0.66
4B & 25	Memorial Springs		0.63	0.69	0.68
32E	Middlecreek Village			0.38	0.28
6B	Miramar Lake		0.76	0.94	0.97
12A	Normandy Forest			0.84	0.80
7A	Northampton	0.71	0.41		
7A	Northampton - Northampton Forest		0.83		
7A	Northampton - Northampton Oaks		0.69		
7A	Northampton - Northampton Pines		0.74		
7A	Northampton - Sterling Ridge at Northampton		1.00		
1D	Northampton Estates - The Greens of Northampton Estates		0.42	0.31	0.46
1D	Northampton Estates			0.00	0.09
52A	Northcliffe Manor	1.10		0.98	1.01
15A	Northcrest Village		0.30	0.47	0.54
5D	Northern Pointe		0.57	0.74	0.77
63C	Northwest Park Colony			0.59	0.63
30A	Oaks of Spring Creek	0.89			
26, 27A, 28A	Oakwood Glen	0.75		0.91	0.99

"Light Green" subdivisions indicate continued increases in the no. of students per home. "Yellow" subdivisions show areas where ratios declined this year. (Population and Survey Analysts)

